



Zdravotně  
sociální fakulta  
Faculty of Health  
and Social Sciences

Jihočeská univerzita  
v Českých Budějovicích  
University of South Bohemia  
in České Budějovice

ABOUT

THE FACULTY



Jihočeská univerzita  
v Českých Budějovicích

**Zdravotně  
sociální  
fakulta**

Faculty of Health  
and Social Sciences



**2nd** largest faculty of the University of South Bohemia  
almost **1 500** students

**19** study programmes

**3** areas of focus – nursing, social sciences, and civil protection

**30** modern classrooms and a hospital Simulation Centre

over **80** partner universities and institutions in 33 countries

**100** % of our students find a job after graduation

---

**COUNTLESS** new experiences and endless knowledge for life...

## STUDY PROGRAMMES

---

### Undergraduate studies

---

- ♥ Dietetics
- ♥ Health and Social Care
- ♥ Laboratory Diagnostics
- ♥ Midwifery
- ♥ Nursing
- ♥ Paediatric Nursing
- ♥ Paramedicine
- ♥ Physiotherapy
- ♥ Protection of Inhabitants Focused on Chemical, Biological, Radiological and Nuclear Noxa and Explosives
- ♥ Radiography
- Social Work

### Postgraduate studies

---

- ♥ Management of Social Work in Organizations
- ♥ Specialization in Nursing

### Viva voce proceedings

---

- ♥ Management of Social Work in Organizations
- ♥ Nursing
- ♥ Rehabilitation and Psychosocial Care of Handicapped Children, Adults, and Seniors
- ♥ Specialization in Nursing

### Doctoral studies

---

- ♥ Nursing
- ♥ Rehabilitation

### Habilitation proceedings

---

- ♥ Health and Social Care
- ♥ Nursing

### Proceedings for the appointment of professors

---

- ♥ Nursing

## WE TEACH PEOPLE TO HELP

---

- ♥ The Faculty of Health and Social Sciences is part of the University of South Bohemia in České Budějovice, located in a city of 100 000 people with a pleasant student atmosphere. The faculty holds an important position in the Czech Republic, mainly because USB is one of the few universities that closely connect health and social issues.
- ♥ The faculty places great emphasis on practical learning – it cooperates with respected health and social organizations, including hospitals and other important institutions. As a result, graduates often find employment in the institutions in which they practised during their studies.
- ♥ The faculty has a unique Simulation Centre for Health-oriented Fields, where students learn the skills they will need in practice in a safe and comfortable environment. The Anatomy and Physiology classroom provides illustrative teaching using interactive methods. Other professional classrooms and laboratories, the Physiotherapy Centre and the Centre for the Prevention of Lifestyle Diseases are also equipped with modern equipment.

### SCIENTIFIC JOURNALS PUBLISHED BY THE FACULTY:

[Journal of Applied Biomedicine](#), an Open Access scientific journal with an impact factor (IF 1.3).

[KONTAKT – Journal of Nursing and Social Sciences related to Health and Illness](#), an Open Access scientific journal with an impact factor (IF 0.3).

[Journal of Nursing, Social Studies, Public Health and Rehabilitation](#), an international scientific peer-reviewed transdisciplinary journal.



## INTERNATIONAL RELATIONS

---

In Europe, the faculty maintains its most intensive cooperation with partners in Finland, Belgium, Austria, Slovenia, Poland, the Baltics, Hungary, Germany and Greece. The most significant partners outside Europe include universities and non-profit organizations in Thailand, Nepal and the USA. International Exchange programmes provide mobility for students and academics and play a key role in the internationalization process of the faculty.

### Exchange programmes for students

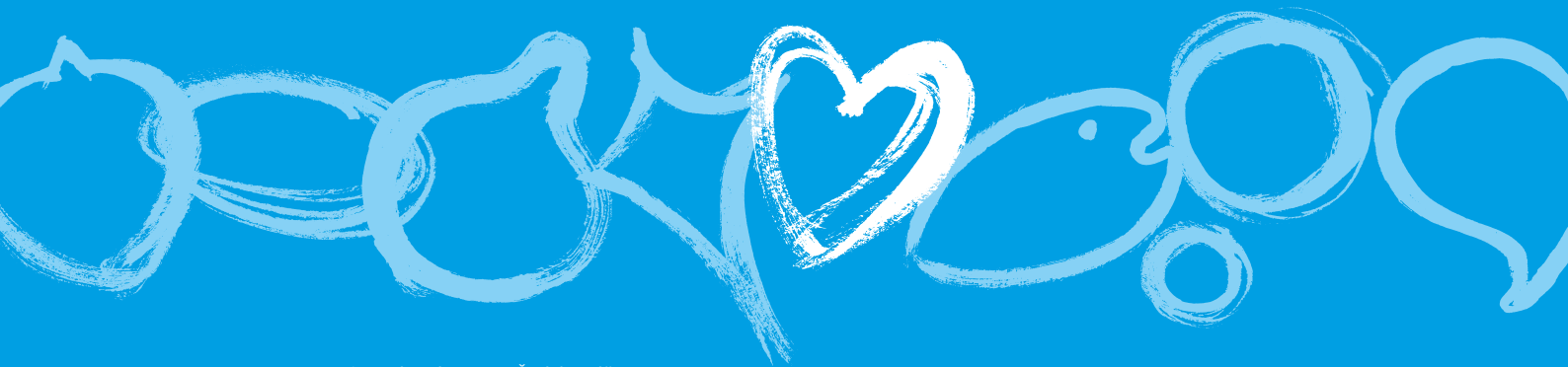
Discover more than 50 English taught courses in our Course Catalogue. We welcome exchange students from our partner universities around the globe to study or do an internship.





Zdravotně  
sociální fakulta  
Faculty of Health  
and Social Sciences

Jihočeská univerzita  
v Českých Budějovicích  
University of South Bohemia  
in České Budějovice



University of South Bohemia in České Budějovice  
Faculty of Health and Social Sciences  
J. Boreckého 1167/27, 370 11 České Budějovice, Czech Republic  
T/ +420 389 037 501, E/ [dekanat@zsf.jcu.cz](mailto:dekanat@zsf.jcu.cz)  
[www.zsf.jcu.cz/en](http://www.zsf.jcu.cz/en)

