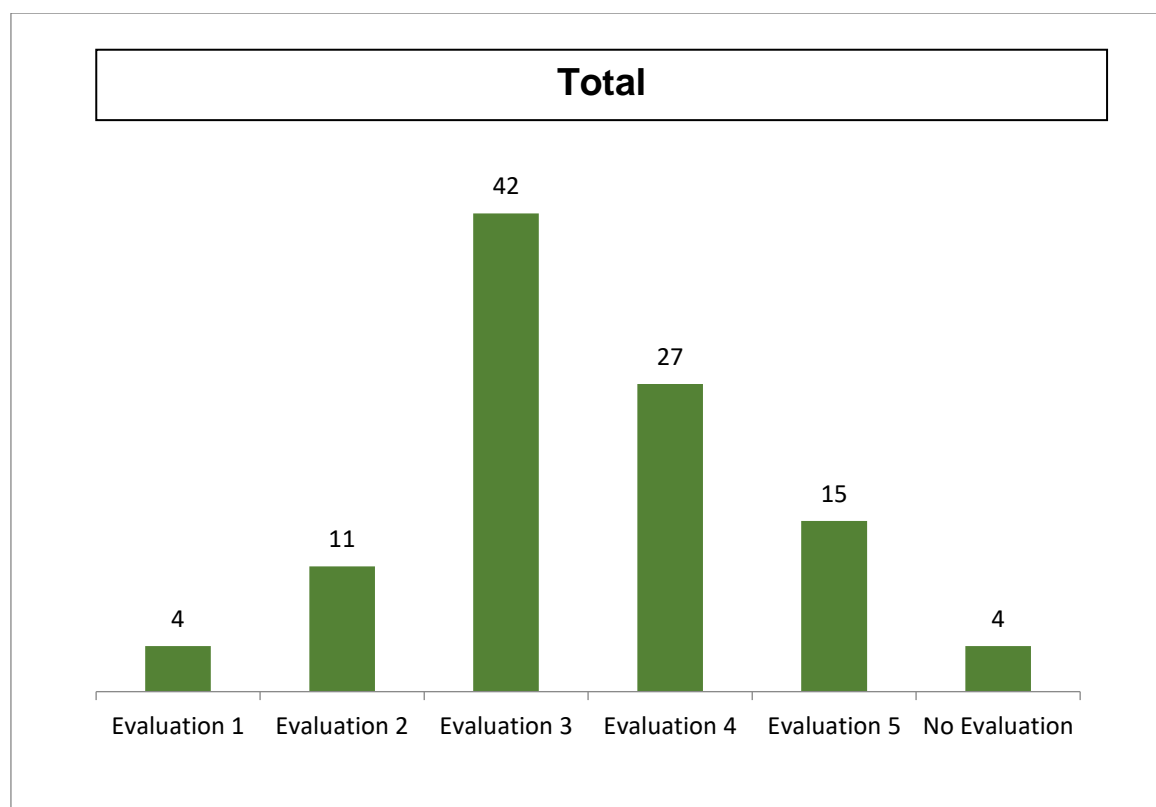


Results of evaluation within the M1 module, University of South Bohemia in České Budějovice



Definition of the evaluation scale 1-5

For the criterion Contribution to Knowledge the results are evaluated based on originality, significance and efforts required to obtain the results:

- 1 - Results that are world-leading
- 2 - Results that are internationally excellent but not top level
- 3 - Results that are recognized internationally
- 4 - Results that are recognized nationally
- 5 - Results that fail to meet the standard for being recognized nationally

For the criterion Social Relevance the results are evaluated as follows:

- 1 - World-leading results, the practical utilization of which will bring about a critical change with international economic impact or a change with extraordinary international impact on society
- 2 - Excellent results, the practical utilization of which will bring about a change with international economic impact or a change with significant impact on society.

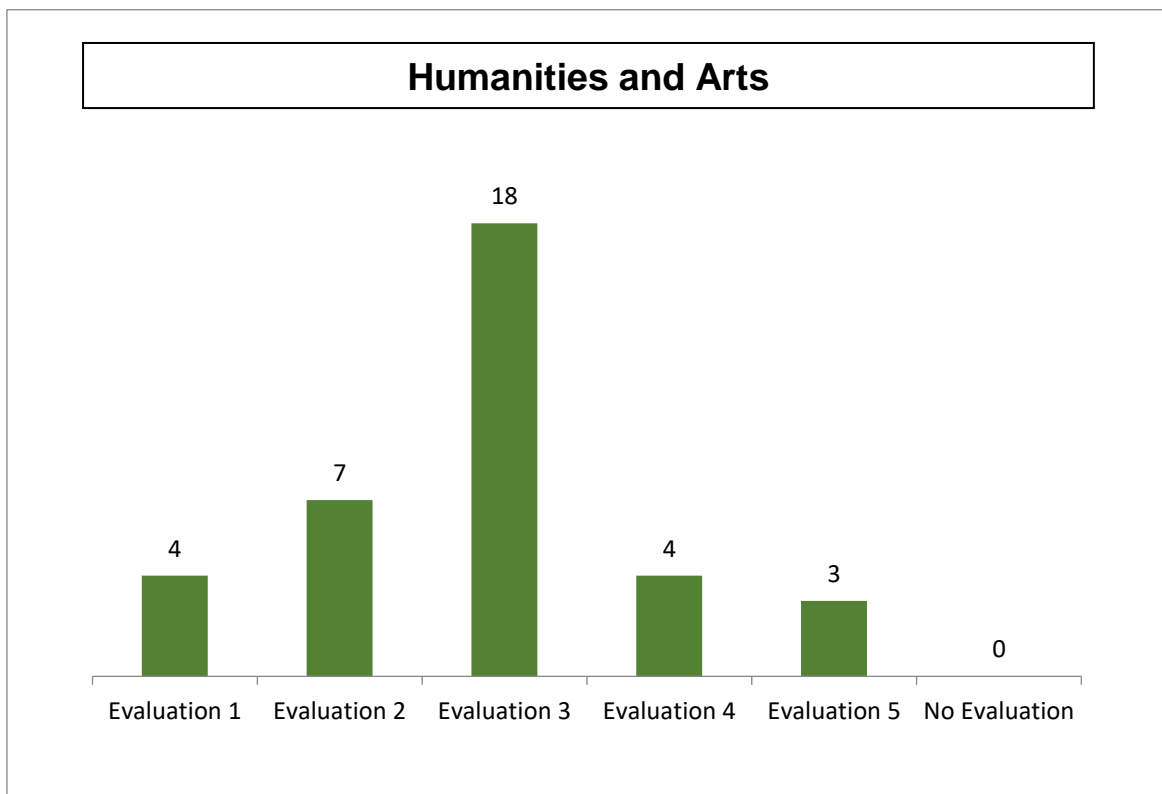
3 - Very good results, the practical utilization of which will bring about a change with economic impact in the Czech market or a change with impact on society

4 - Average results, the practical application of which will bring about a partial change with economic impact in the Czech market or a partial change with impact on Czech society

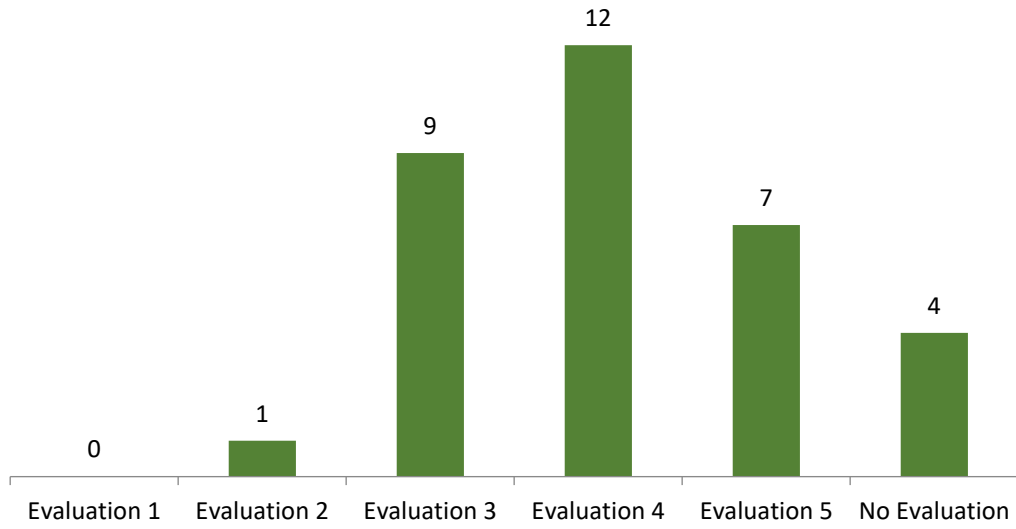
5 - Below-average results, the practical application of which is likely to bring about no change with economic impact or change with impact on Czech society

Out of total 103 results submitted by USB for peer-review evaluation in M1, 70 were submitted for the criterion Contribution to Knowledge, 33 for the Criterion Social Relevance. The “No evaluation” in the graph means that for these four results did not obtain any evaluation within the evaluation period (no reviewers were found for these results).

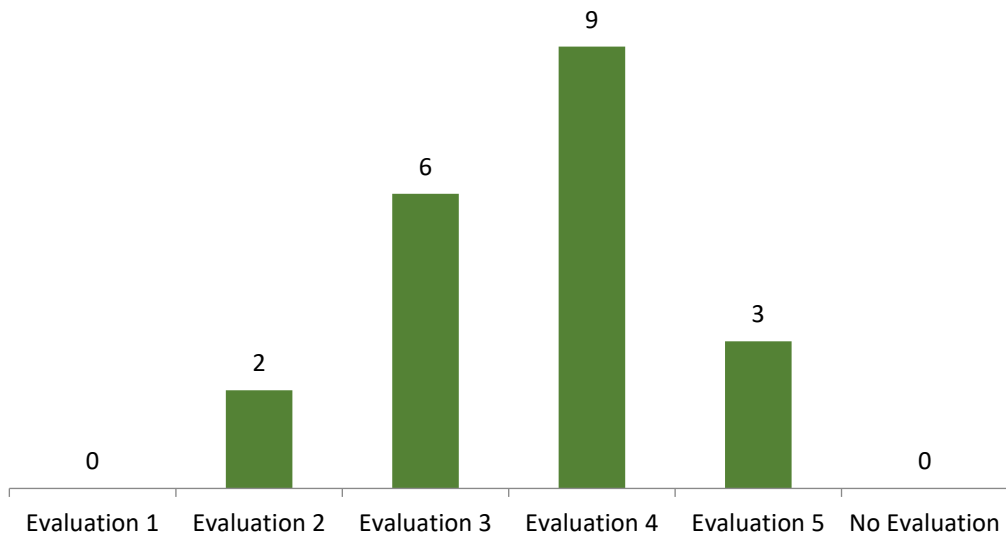
While the first graph above shows the statistics of all results submitted by USB. The graphs below shows the statistics in individual research branches.



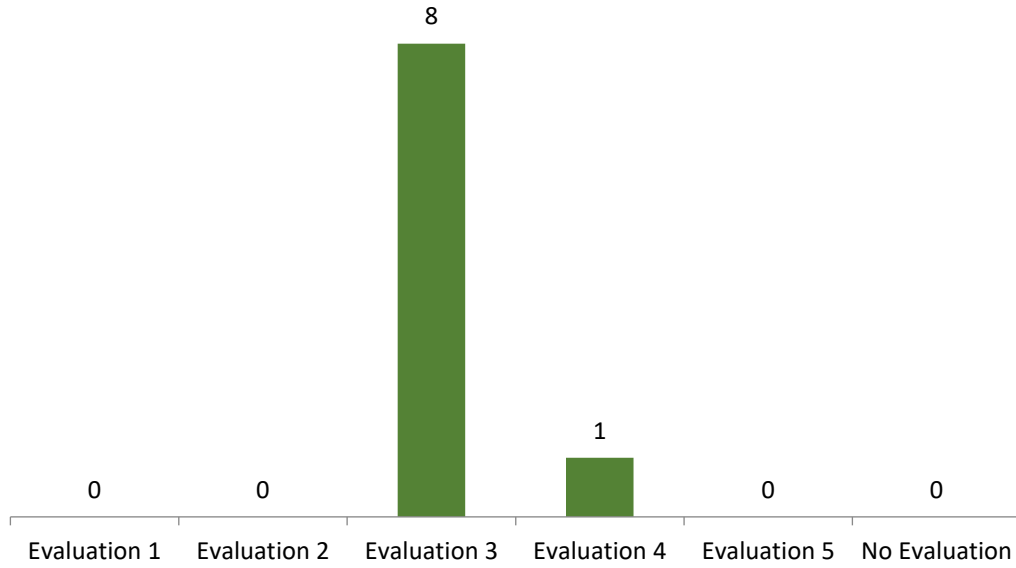
Social Sciences



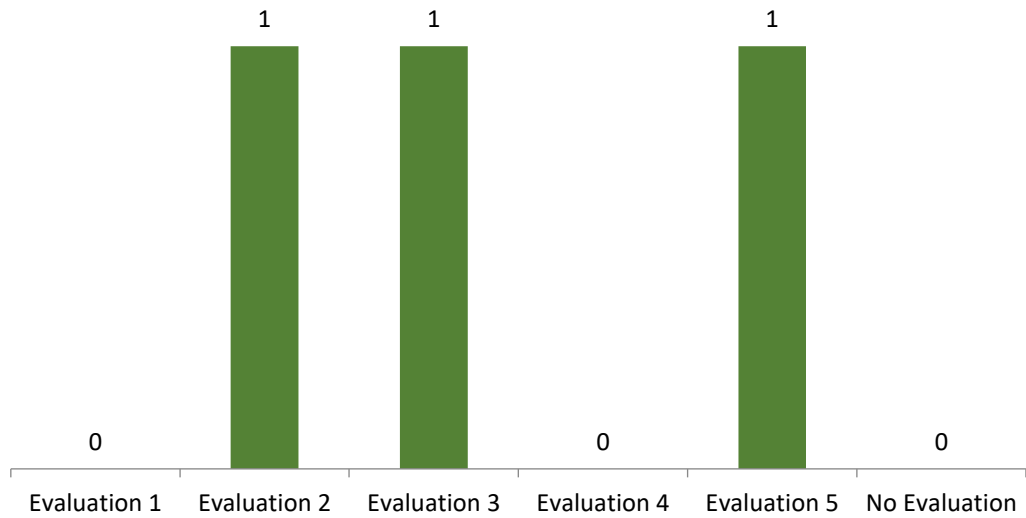
Agricultural and Veterinary Sciences



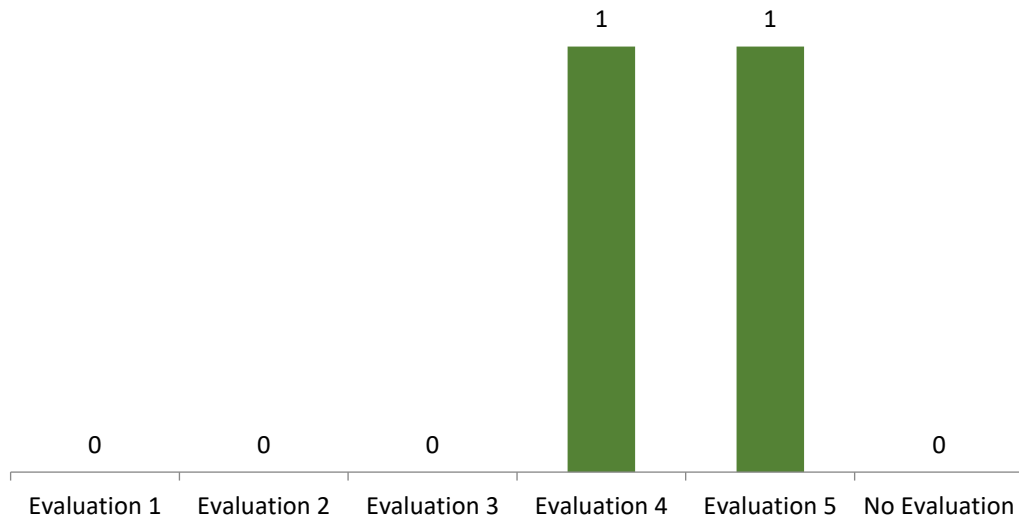
Natural Sciences



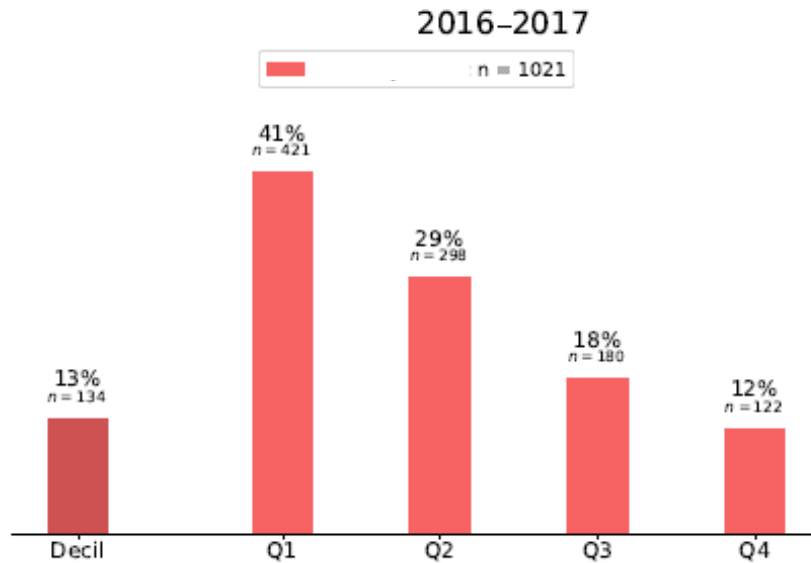
Medical and Health Sciences



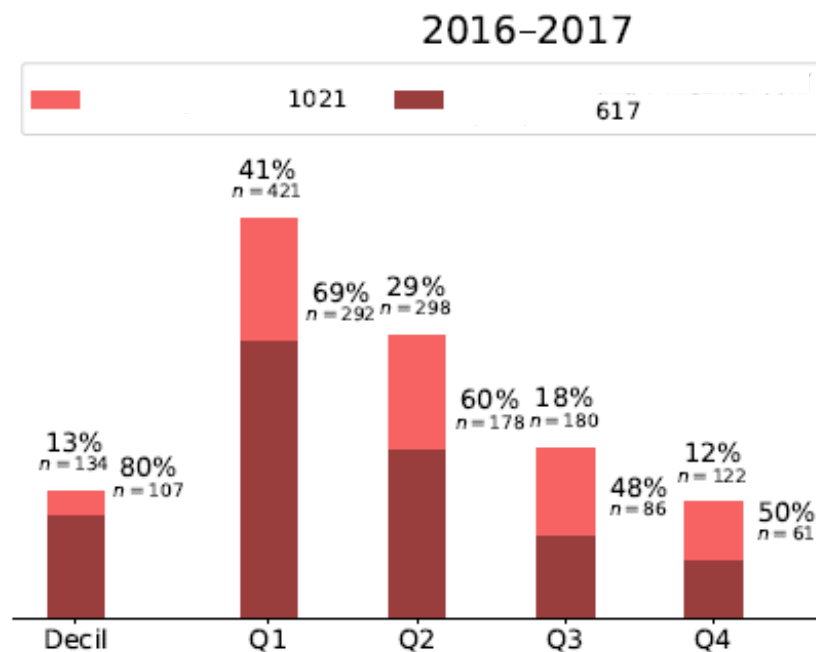
Engineering and Technology



Brief statistics from bibliometric reports within module M2



A complete publication profile of USB showing a distribution of all USB results appearing in WoS in 2016 and 2017. The assignment of journals to quartiles is given by ranking the journals in each FORD (Field of Research and Development) by AIS (Article Influence Score).



The same graph as above, but now showing the fraction of results achieved within an international collaboration (dark boxes). The correlation between the quality of results (=publication in high-ranked journals) and international collaboration is obvious.